

**YES**

**OR**

**INFORMATION FOR LABORATORIES**

**NO?**

© 2001 PHADIATOP®INFANT BROCHURE FOR LABORATORIES  
UPPSALA, SWEDEN

PHADIATOP® IS A TRADEMARK  
OF PHARMACIA DIAGNOSTICS AB

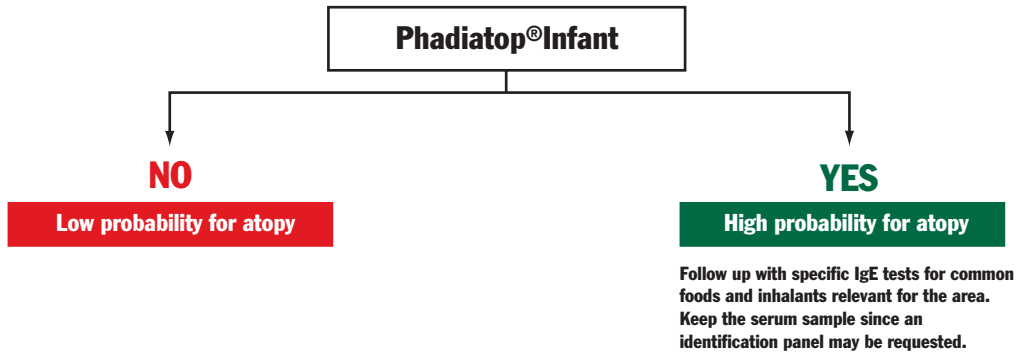
PRODUCED BY HERA  
PRINTED BY TK I UPPSALA AB

# A NEW TEST FROM PHARMACIA DIAGNOSTICS TO BE INCLUDED IN THE ROUTINE PANEL

Phadiatop® Infant, the test of choice for small children

## WHEN ALLERGY IS SUSPECTED

Phadiatop Infant is the first step in identifying the source of a child's symptoms. The second step is to discover the causative allergen with an identification profile. Then the proper course of action can be initiated before the allergy march progresses to more severe disease.



## IDENTIFICATION OF CAUSATIVE ALLERGEN

### Examples:

- Egg white
- Milk
- Peanut
- House Dust Mite
- Cat Dander
- Dog Dander
- Local Pollens  
(Grass, Tree, Weed)

# ATOPY AND THE VALUE OF AN EARLY ANSWER

Atopy is the strongest identifiable predisposing factor for development of asthma.\*  
Atopy is defined as: “a personal or familial tendency to produce IgE antibodies in response to low doses of allergens...”\*\*

## PHADIATOP INFANT THE ATOPY MARKER FOR CHILDREN

Phadiatop Infant is an Atopy test especially designed for children up to four years of age. It includes both food and inhalant allergen components based on common offending allergens known to cause atopic disease in the age group.

## DETECTS MORE THAN 9 OUT OF 10

270 children, up to the age of 4 years, with symptoms of wheezing and/or eczema were investigated in two independent studies (1, 2) using Phadiatop Infant. The children were classified as either atopic or non-atopic by a pediatric allergist prior to UniCAP Phadiatop Infant assay.

	(1)	(2)
Sensitivity:	98%	92%
Specificity:	89%	82%

\* Reference: The Allergy Report (AAAAI) 2000; [www.theallergyreport.org](http://www.theallergyreport.org)

\*\* Reference: Position paper. A revised nomenclature for allergy. An EAACI position statement from the EAACI nomenclature task force, Allergy 2001; 56: 813-824

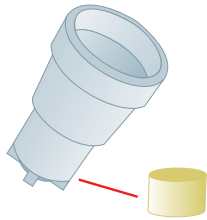
Reference: (1) Study performed by Dr. R. Halvorsen, Oslo, Norway. Proprietary Information

(2) Study performed by Dr. A. Fiocchi and Dr. R. Besana, Milan, Italy. Proprietary Information

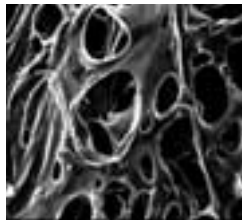
## PROVEN RELIABILITY

To provide quantitative results and high sensitivity, it is critical that the solid phase has sufficient capacity to bind all clinically relevant proteins of the allergen, including those present in low amounts in the allergen source material. Quantitative and reliable measurement of specific IgE depends on the excess availability of relevant allergen components.

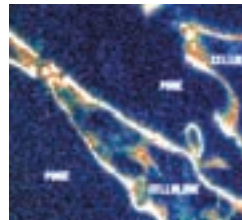
### IMMUNOCAP SOLID PHASE ENSURES EXCESS ALLERGEN BINDING CAPACITY



ImmunoCAP with  
cellulose matrix



The matrix provides a  
large inner surface



Magnitude 840 X



Magnitude 98400 X

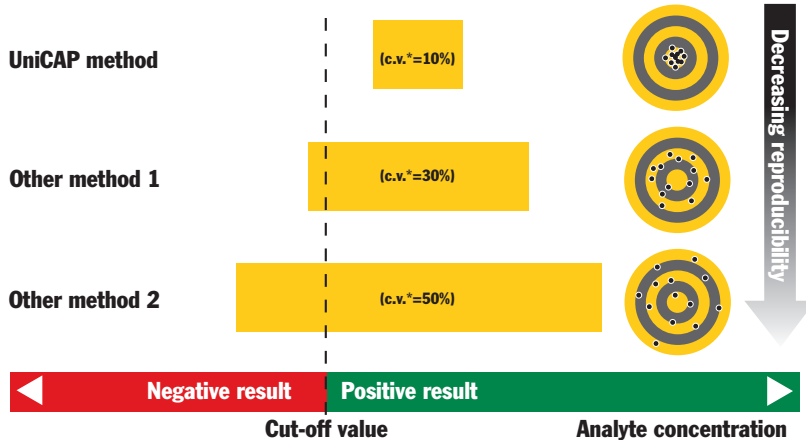
### PHADIATOP INFANT PRECISION

The variation within an assay was calculated using response values (RU) of a positive sample and Pharmacia Specific IgE Negative Control. These coefficients of variation were obtained for each sample assayed in 2 replicates on 10 different occasions. The same reagent and ImmunoCAP lots were used throughout the study.

Coefficients of variation within assay	C.V. %
Positive Sample	2
Pharmacia Specific IgE Negative Control	6

## A TEST YOU CAN TRUST

Good reproducibility and accuracy are necessary for good clinical performance.



C.V.= coefficient of variation = relative standard deviation = standard deviation in percent of mean value.

Decreasing reproducibility increases the risk for false-negative results.

## CHANGING THE FUTURE – PREVENTING THE ALLERGY MARCH

The progressive development of allergy is often referred to as the Allergy March.

One child in five faces this difficult journey.

Can this march be predicted and prevented?

### PHARMACIA'S COMMITMENT TO PREVENTION

- Allergy is a widespread disease causing millions of lost workdays each year.
- Common allergic disorders develop into severe conditions later in life.
- Identification of children at risk and identification of offending allergens are essential for correct action.

### PHARMACIA DIAGNOSTICS PROVIDES THE TOOLS FOR EARLY AND CORRECT DIAGNOSIS

# PHADIATOP® INFANT IMMUNOCAP™

## UNICAP

Product	Size	Art. no.
Phadiatop Infant ImmunoCAP	3x16	14-4510-35
Specific IgE	96	10-9253-01
Specific IgE Conjugate	6x96 (6x5.1 ml)	10-9419-01
Specific IgE Calibrators	1 curve	10-9254-01
Specific IgE Curve Controls	3 pairs	10-9408-01
Anti-IgE ImmunoCAP	16	14-4417-01
Development	400	10-9263-01
Washing Solution	5x1 l	10-9422-01

## PHARMACIA CAP SYSTEM FEIA

Product	Size	Art. no.
Phadiatop Infant ImmunoCAP	3x16	14-4510-35
Specific IgE FEIA Reagents	96	10-9125-01
Specific IgE FEIA Reagents	384	10-9231-01
Specific IgE RIA/FEIA Standard Reagents	8 assays	10-9213-01
Washing Solution	5x1 l	10-9422-01
Dummy ImmunoCAP	16	14-4317-01

## PHARMACIA CAP SYSTEM RIA

Product	Size	Art. no.
Phadiatop Infant ImmunoCAP	3x16	14-4510-35
Specific IgE RIA Reagents	96	10-9120-01
Specific IgE RIA Reagents	384	10-9232-01
Specific IgE RIA/FEIA Standard Reagents	8 assays	10-9213-01
Washing Solution	5x1 l	10-9422-01
Dummy ImmunoCAP	16	14-4317-01



# Phadiatop<sup>®</sup> Infant



**PHARMACIA** *Diagnostics*

Pharmacia Diagnostics AB, SE-751 82 Uppsala, Sweden

Tel +46 18 16 30 00, Fax +46 18 14 03 58, e-mail: [marketing.diagnostics@pharmacia.com](mailto:marketing.diagnostics@pharmacia.com)

[www.diagnostics.nu](http://www.diagnostics.nu)

**Head office Sweden** +46 18 16 30 00 **Austria** +43 1 68 05 00 **Belgium** +32 2 727 44 11 **Brazil** +55 11 5508 3000  
**Canada** +1 905 755 3000 **Denmark** +45 32 96 52 00 **Finland** +358 9 852 071 **France** +33 1 30 64 34 00 **Germany** +49 761 47 805-0  
**Great Britain** +44 1 908 60 37 98 **Italy** +39 02 483 81 **Japan** +81 3 5365 8332 **Netherlands** +31 348 49 49 49  
**Norway** +47 24 09 38 00 **Portugal** +351 21 424 92 65 **Spain** +34 93 582 16 16 **Sweden** +46 18 16 30 00  
**Switzerland** +41 1 802 82 00 **Taiwan** +886 2 2516 0925 **United States** +1 800 346 4364 **Other countries** +46 18 16 56 16