

sebia challenge results

SOMAGEN™
DIAGNOSTICS

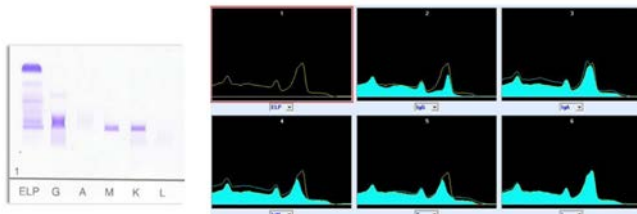
Sebia Challenge #1 Results

Patient Case History

67 years old female. No previous results for SPE or IFE.

Patients is consulting for fatigue and night sweat.

Serum protein concentration: 67 g/L



The correct interpretation of these results is:

IgM kappa + Heavy Chain Disease

Gamma Heavy Chain Disease (Franklin's disease) is very uncommon and strikes at around 50 years of age. It is reminiscent of lymphoma. Recurrent bacterial infections are principal causes of morbidity and death. The gamma chain can be found in serum and urine. Occasionally, the gamma chain is found in tissues as a component of amyloid deposits. This *heavy chain deposition disease* can lead to nephropathy and renal depositions that resemble *light chain deposition disease*. (Source from *Guide to Electrophoresis and Immunofixation in Clinical Diagnosis*, Borek Janik, Ph. D. June 2006).